

# Meet tFLOW.®

Aleyant's tFLOW is a powerful digital and large format prepress workflow automation software solution that simplifies difficult file management tasks and processes to optimize efficiency and production throughput.



## **Automate Repetitive Prepress Tasks**

tFLOW eliminates redundant manual touch points and provides team communication tools for today's workplace.



## **Easy Integration**

tFLOW connects with Aleyant Pressero and PrintJobManager. In addition, it integrates with most MIS/ERP, Web-to-Print, and Output System.



## **Fast. Simple. Safe. Mobile.**

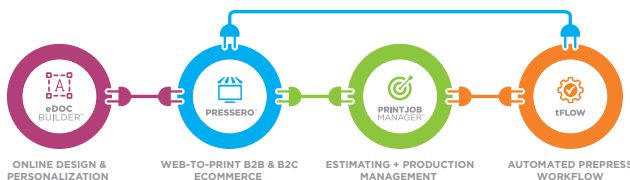
Connect to tFLOW from any device, anywhere, anytime.

## **tFLOW® professional**

Tailored to small and mid-sized companies that process 20 to 40 files per day, with added space and custom proof templates.

## **tFLOW® enterprise**

Our state-of-the-art, flagship package. Most popular with mid- to large-sized companies. Available as cloud-based or self-hosted.



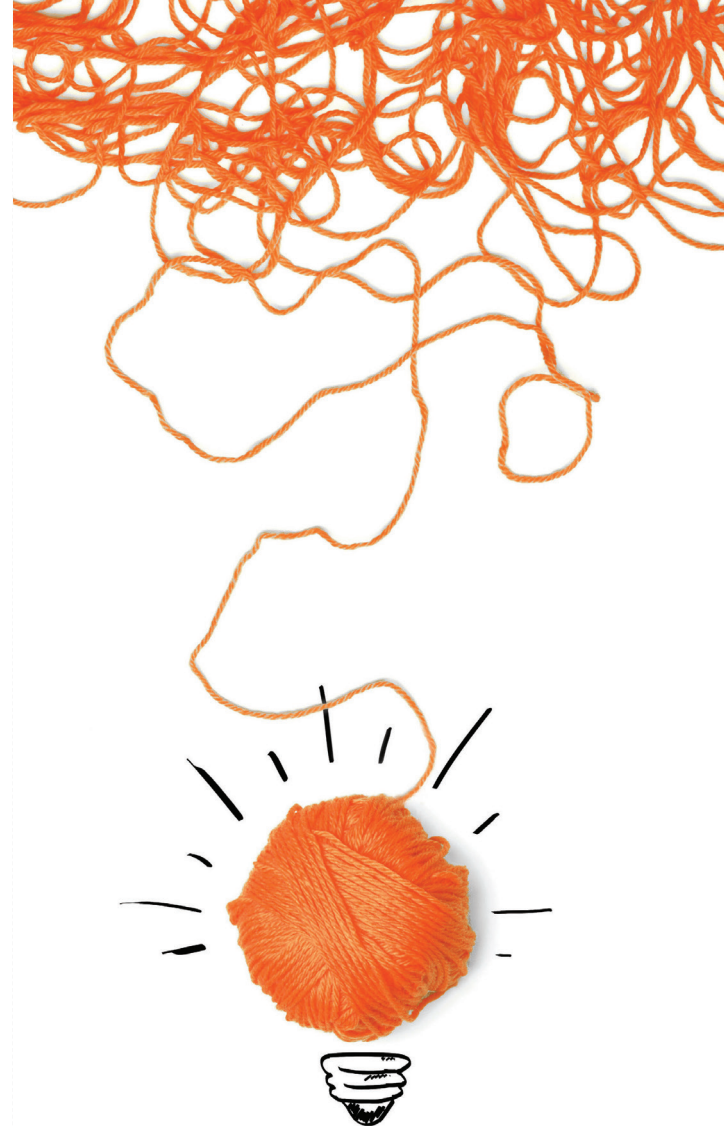
Aleyant creates web-to-print, estimating and production, and prepress automation workflow software for graphics professionals. By unifying production processes, we expand our customers' ability to be more available, efficient and profitable.

For more information on how Aleyant's software can help your business, visit [aleyant.com](http://aleyant.com).



aleyant®

312 S. Hale Street  
Wheaton, IL 60187  
[info@aleyant.com](mailto:info@aleyant.com)



# Looking for an idea to improve your workflow?

# Own your workflow.

Prepress automation workflow software that is simple, integrated, mobile and collaborative.

Print operations can be enhanced by using Aleyant tFLOW, a powerful digital proofing and prepress automation workflow that is already integrated into the Aleyant ecosystem. It simplifies difficult file management tasks and processes to optimize efficiency and production throughput.

tFLOW allows customers, sales representatives, prepress operators and production teams to collaborate in real-time 24/7 with total visibility, eliminating lengthy email chains, text messages and calls that cause missed deadlines and costly mistakes and delays. In addition, tFLOW's modern and open architecture easily integrates with many MIS, Web2Print, ERP and output systems.

## Aleyant's tFLOW can automatically proof, fix file issues, create a report and much more.

### Dashboard

tFLOW's dashboard provides real-time information and updates. tFLOW will give you status updates on all of your jobs every 15 seconds. Keep track of jobs which are still waiting for approvals, missing artwork, on hold due to preflight errors, and ready to be sent to production. All without a single phone call or email.

### Autoproof

tFLOW automatically creates proofs based on your templates. Create your own layout with the information you would like to appear on the proof, and tFLOW will autofill the fields as well as automatically place artwork on landscape and portrait layouts. You can also add elements such as marks, trim, live area indicators, and finishing parameters. Proofs are automatically sent out for approval, and can also be downloaded as PDFs.

### Preflight

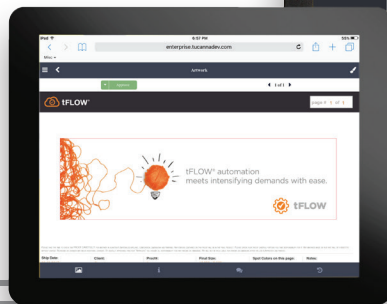
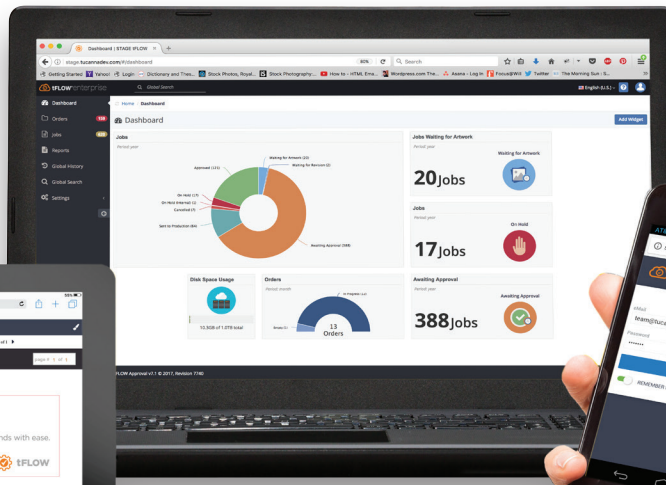
tFLOW puts the "pre" back into preflight. Speed up your turnaround times as files are automatically checked when they come into your shop, not after they have been sitting in folders for a day. You, your customer, and sales team will know if files are printable within a couple of minutes of receiving them. Files are not just checked, but also fixed, with options such as adding bleed, marks, flattening transparencies, converting fonts to outlines, and checking spot color integrity, to name a few.

### Autoflow

Start automating repetitive prepress tasks. This allows designers to be designers—lets them spend time on custom projects by automating the timely, repetitive tasks.

### Collaboration

Tired of receiving emails, and being cc'd on countless others? tFLOW allows you to collaborate real-time, making comments and annotations on the proof quick and simple. Everything about the job is visible to everyone on the team—not lost somewhere in your inbox.



**Want to learn more?**  
Visit [tFLOWworkflow.com](http://tFLOWworkflow.com)  
and request a demo today.

